

The Building Façade finish may be subject to change



THE FAIRVIEW

4 Bedroom Detached | 1,848 Sq. Ft.

Plot 2 Hillside Manor, Magherafelt, BT45 6EX
Asking Price £430,000



Features

- Hillside Manor is ideally situated less than a mile from the heart of Magherafelt where the town's charm meets the tranquility of open countryside.
- This development offers a fresh and captivating interpretation of the area's character, blending modern living standards with timeless design.
- The homes showcase a harmonious balance of contemporary and heritage styles, with characterful exteriors featuring a mix of brick and render finishes.
- Inside, the spaces are open, bright, and thoughtfully designed to meet the needs of today's residents.
- The town centre is a vibrant hub, dotted with artisan eateries, delis, and stylish boutiques, creating a self-contained haven where residents of all ages feel welcomed and supported.
- Nestled between the River Bann and Lough Neagh to the east and the stunning Sperrin Mountains to the west, Magherafelt offers residents breathtaking natural beauty and endless opportunities.
- A management company will be formed to cover the overall maintenance and upkeep of the development.
- Magherafelt is also a well-connected town, making it an ideal commuter location. It is equidistant from both Belfast and Derry/ Londonderry, with easy access to an upgraded dual carriageway and the M2
- This prime location combines the peacefulness of a serene market town with convenient access to major urban centres, making it the perfect place to live, work, socialise and raise a family.
- SPECIFICATIONS
- Each home will have Natural Gas Central Heating.
- PVC fascia boards, doors and windows.

Contact Us

Viewing By Appointment Only

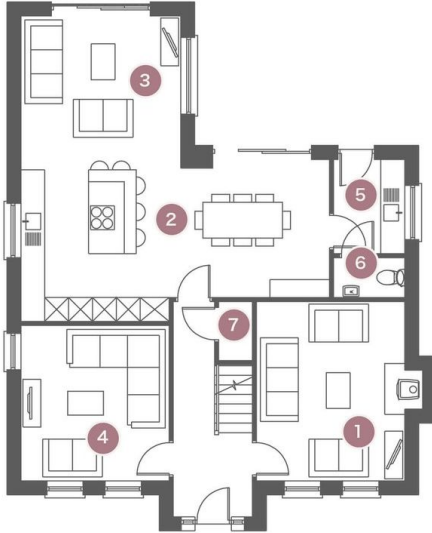
028 796 33719

magherafelt@burnshomes.co.uk

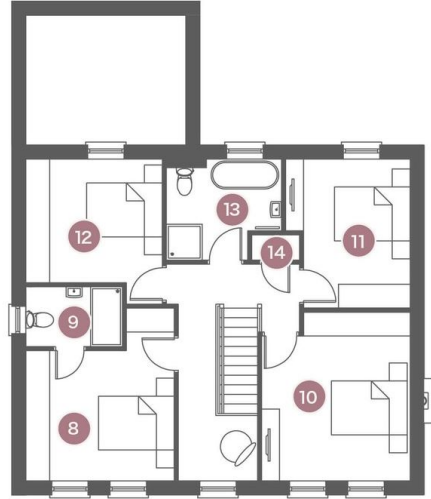
Please Scan QR Code or visit burnshomes.co.uk for further details, including extra pictures, interactive 360 virtual tours and full EPC report (where applicable).

THE FAIRVIEW

4 Bedroom Detached
1,848 Sq. Ft.



GROUND FLOOR



FIRST FLOOR

1. Lounge	14' 9" x 12' 3"
2. Kitchen/Dining	24' 10" x 13' 4"
3. Sunroom	13' 2" x 11' 10"
4. Snug	12' 10" x 12' 3"
5. Utility Room	7' 9" x 5' 10"
6. WC	5' 10" x 3' 3"
7. Store	4' 10" x 2' 9"
8. Master Bedroom	14' 6" x 12' 3"
9. Ensuite	7' 12" x 4' 11"
10. Bedroom Two	13' 11" x 12' 3"
11. Bedroom Three	11' 3" x 10' 2"
12. Bedroom Three	12' 3" x 10' 3"
13. Bathroom	9' 6" x 8' 4"
14. Hot Press	3' 11" x 2' 7"