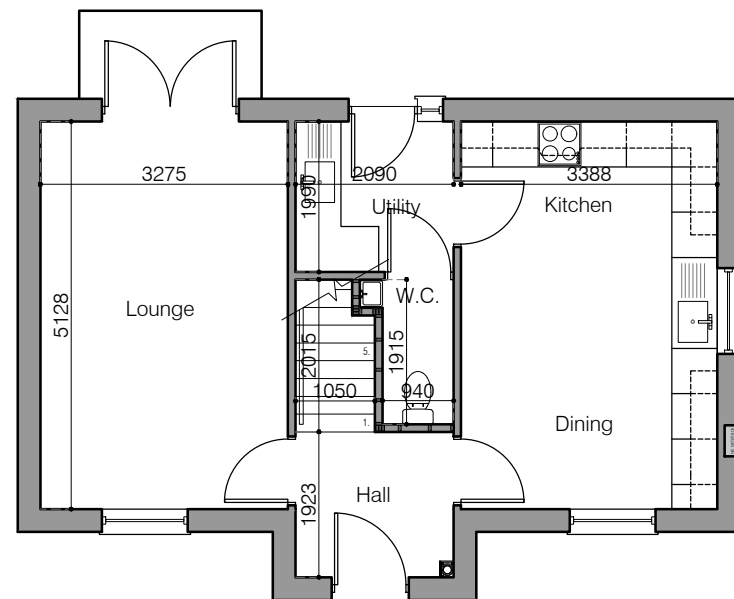
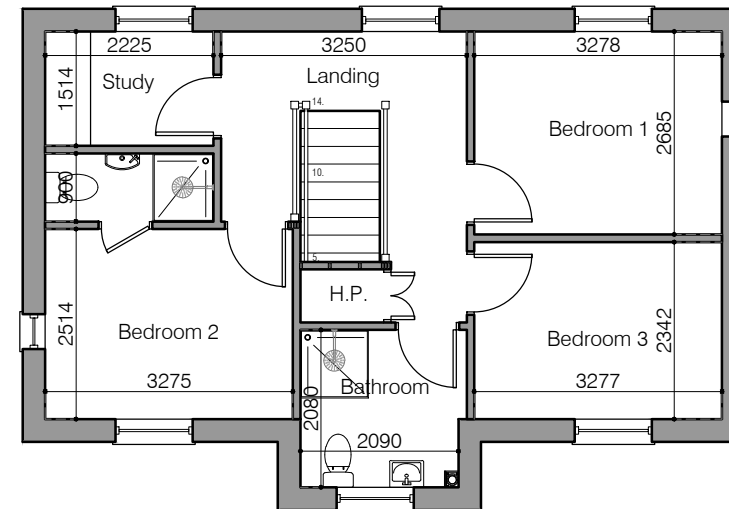


1. © Copyright rests with Vision Design. This drawing may not be reproduced wholly or in part without the express written permission of Vision Design
2. All drawings issued prior to the relevant Planning and Building Regulations have been obtained are to be deemed preliminary. Any works carried out based on preliminary drawings are entirely at the clients risk. Vision Design cannot be held responsible for additional works/expense incurred on this basis.
3. Contractors to carry out their own due diligence and report any errors to this office.
4. All dimensions are in mm unless stated otherwise



Proposed Ground Floor Plan

Scale 1:100  
 GF Area: 47.8m<sup>2</sup> (514.5 ft<sup>2</sup>)  
 FF Area: 47.8m<sup>2</sup> (514.5 ft<sup>2</sup>)  
 Total Area: 95.6m<sup>2</sup> (1029.0 ft<sup>2</sup>)



**For Information Only**

| Revision | Drawn By | Chkd By | Date | Comments |
|----------|----------|---------|------|----------|
| -        | DH       | -       | -    |          |

Thomas Porter

**VISION**  
 DESIGN | ARCHITECTURE

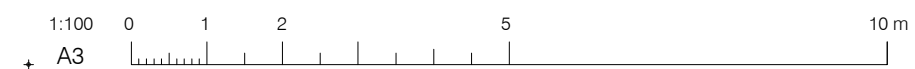
31 Rainey Street  
 Magherafelt  
 N. Ireland  
 BT45 5DA  
 visiondesign.org.uk  
 tel: 028 7930 0866

Gallion Heights,  
 Moneymore, BT45 7UP

Residential Development

House Type Floor Plans  
 HT M2b - 2no plots

**4058 SK01**



|                     |                    |
|---------------------|--------------------|
| Scale<br>1:100 @ A3 | Date<br>March 2024 |
|---------------------|--------------------|